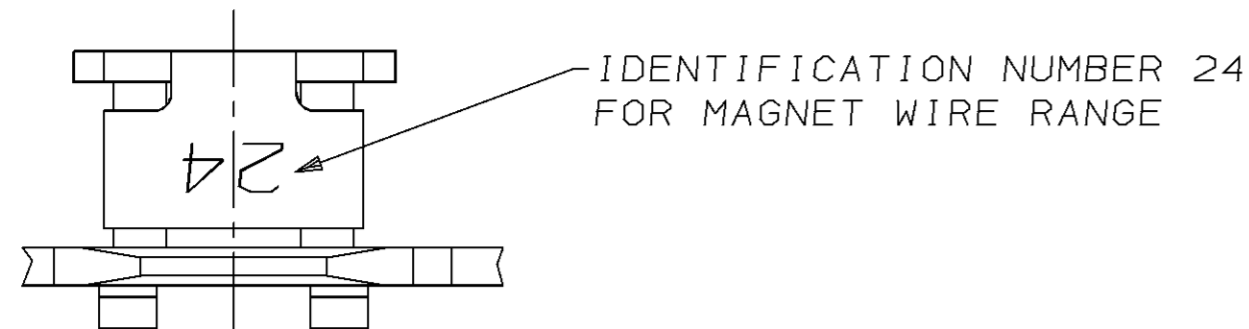
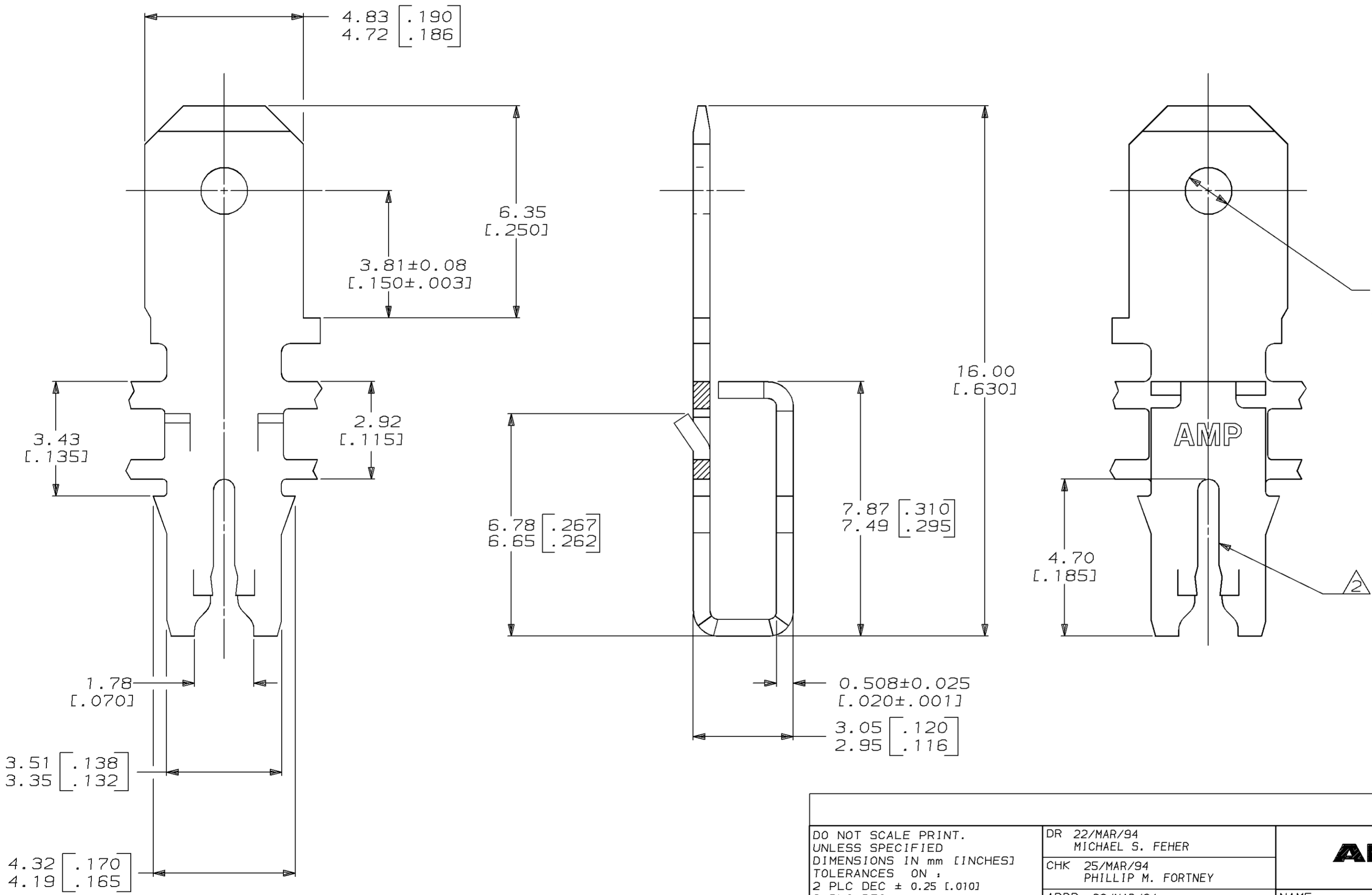


LOC		DIST		ZONE		LTR		REVISIONS		DATE	APPD
AF	50	P	F			A		REL TO PRODUCTION PER 0710-0158-94	24/JUN/94	RB/NN	



- 1 CONTINUOUS STRIP ON REELS WITH TERMINALS LOCATED ON 5.59±0.08 [.220±.003] CENTERS.
- 2 SLOT TERMINATES A SINGLE MAGNET WIRE ONLY. COPPER RANGE: 0.91-1.15mm [#19-#17] AWG.
- 3 AFTER INSERTION INTO PLASTIC HOLDER TAB PORTION MUST BE BENT OVER 45° TO 90° OR POTTED-IN TO PREVENT PULL-OUT WHEN MATING RECEPTACLE IS DISCONNECTED.



63782-1
PART NO

DO NOT SCALE PRINT. UNLESS SPECIFIED DIMENSIONS IN mm [INCHES] TOLERANCES ON: 2 PLC DEC ± 0.25 [.010] 3 PLC DEC ± - ANGLES ± -	DR 22/MAR/94 MICHAEL S. FEHER	AMP Incorporated Harrisburg, PA 17105-3608	
	CHK 25/MAR/94 PHILLIP M. FORTNEY		
MATERIAL 4M BRASS	APPD 28/MAR/94 NELSON E. NEFF	NAME TERMINAL, TAB, 4.75 [.187] FASTON™ MAG-MATE™	
FINISH 0.002032 [.000080] MIN TIN PER MIL-T-10727	APPD 28/MAR/94 TERRY L. SHUTTER	PRODUCT SPEC 108-2012	DRAWING NO G=63782
	APPLICATION SPEC 114-2067	SIZE C	CAGE CODE 00779
	WEIGHT -	SCALE 10:1	SHEET 1 OF 1

THIS DRAWING IS A CONTROLLED DOCUMENT FOR AMP INCORPORATED. IT IS SUBJECT TO CHANGE AND THE CONTROLLING ENGINEERING ORGANIZATION SHOULD BE CONTACTED FOR THE LATEST REVISION.